

Directions for MathPad Plus Exploration

PC: Start – Programs – IntelliTools Software – MathPad Plus

Click to enter as a Guest.

• Explore Entering Problems on Worksheet

1. Type desired problem.
2. Click New Problem icon to enter the next problem.

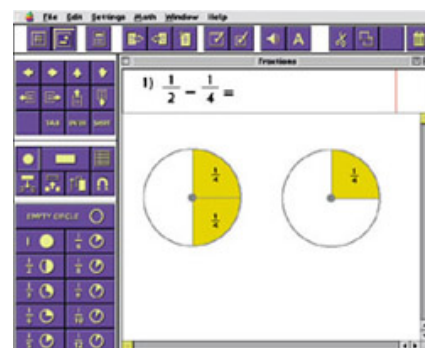
Typing Commas: Type number, then comma.

Typing Decimals: Type period then number.

To delete a decimal, click on decimal #, type period

Typing Fractions

1. Click on the Fraction icon.
2. Type the numerator, position mouse/click or use down arrow to enter the denominator.
3. Position mouse/click or use right arrow to enter the operation.
4. Click on the Fraction icon.
5. Type the numerator, position mouse/click or use down arrow to enter the denominator.
6. Click Horizontal/Vertical icon to change orientation if desired.



• Explore Student Use

Explore options for entering numbers

- Can enter #'s by clicking on icons or typing.
- Can use arrows to locate where to enter the numbers.

Explore Navigation options (Settings Menu)

• Manual Navigation – no check of auto navigation in Settings

The student positions the entry box for each step of problem completion.

• Automatic Navigation – check in Settings

The entry box automatically moves to the “best guess” position to help guide problem completion. This also requires fewer movements to solve the problem.

• Explore Manipulatives Mode

Click on Manipulatives Icon (or Window – Manipulatives).

The Numbers and Math Toolbars disappear ... replaced by Manipulatives Toolbar.

Types of Manipulatives

Students can work with circles and bars to represent fractions or grids to explore decimal concepts. Each type of manipulative comes with its own set of icons.

Explore

- Trading Up/Down (to help student understand equivalent fractions)
- Arrange Overlapping Manipulatives (compare relative sizes (greater than, less than, equal to))
- Snap Together (to move randomly placed pieces together (removes blank spaces))

• Explore display options (Settings Menu)

Customizable display allows adjustments of colors, fonts, etc.

• Explore speech options (Math Menu)